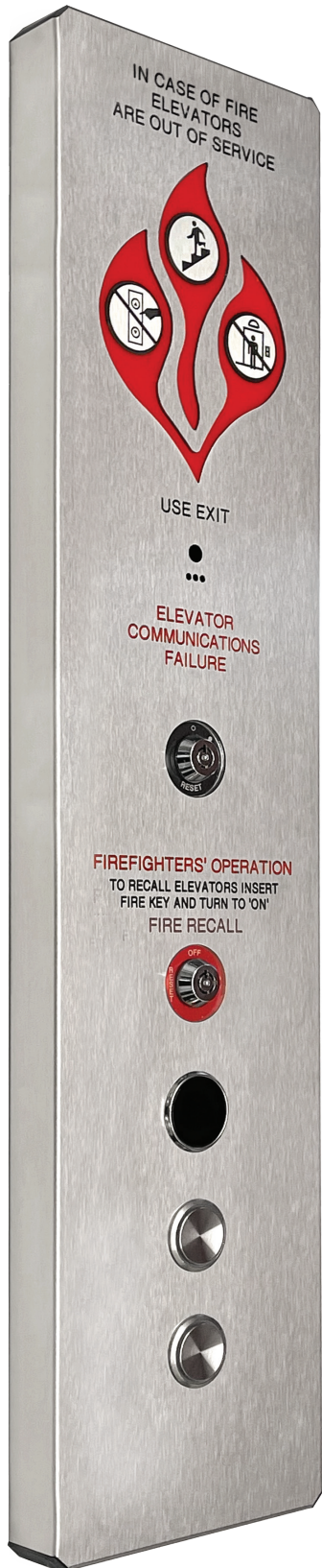


# G2 Surface Mount

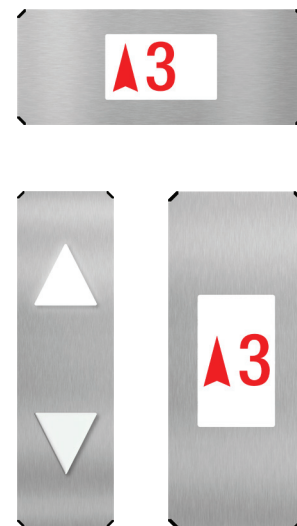
## HALL FIXTURE



The **G2 Surface Mount** redefines the surface mount fixture by offering all the benefits of a pan-shape fixture in a lightweight, cost-effective, and easily customizable unit. At 1.25" in depth the G2, together with the use of pancake key switch contact blocks, solves the issue of key switches protruding out of the back of the unit. This fixture can be mounted without the need for any wall cutouts



Hall Stations



Hall Lanterns

### Advantages

- ✓ No need for wall cut outs
- ✓ Lighter than its welded pan-shape counterparts
- ✓ Hidden exterior fasteners for enhanced aesthetic
- ✓ Fully enclosed key switches using pancake contact blocks

## General Details

The G2 Surface Mount is a true mount that has the ability to fit any component less than its 1.25" depth. Angle corners made of durable molded dark grey material that compliments a variety of metal finishes.

The G2 Surface Mount fixture is the ideal option for those looking for a durable and functional surface mount without the need for cut outs.

## Dimensions

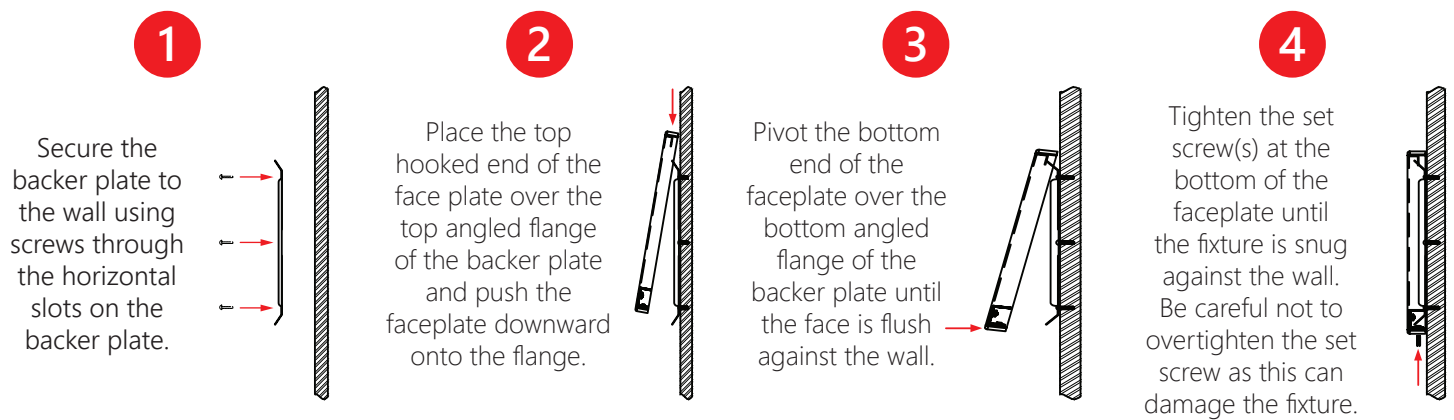
**Width:** Variable

**Depth:** 1.25"

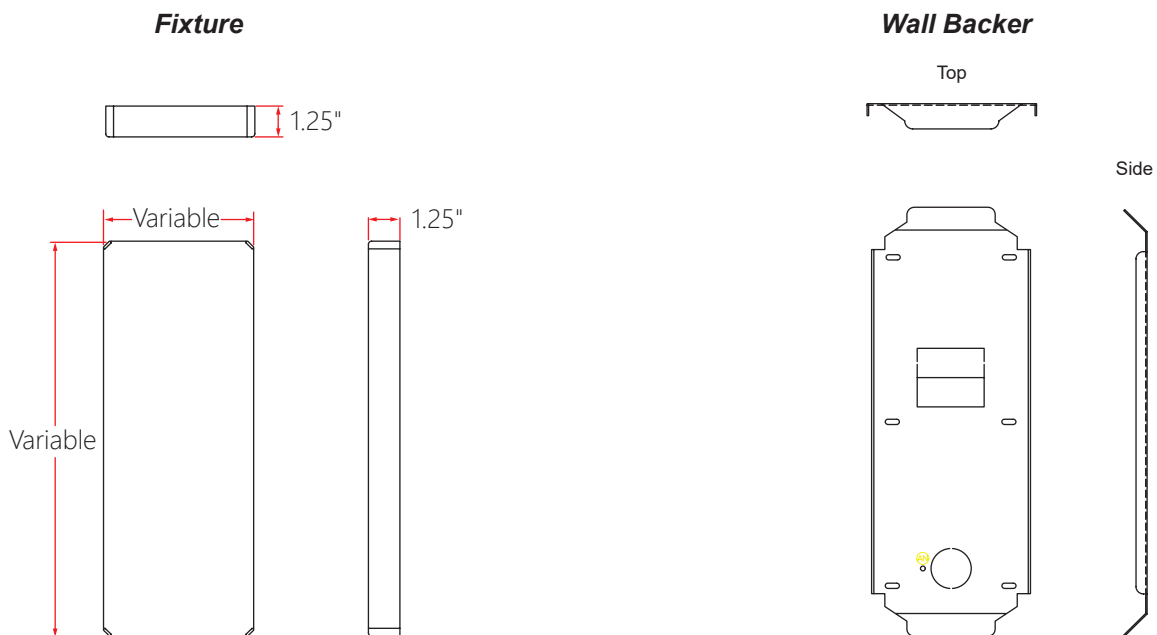
**Height:** Variable

**Available Finishes:** Brushed (#4) or Mirror (#8) Stainless Steel, PVB Brass or any 20ga Custom Material

## Product Installation



## Product Specifications



This publication is for general informational purposes only. Product design is subject to change without notice. Actual product colors and finishes may vary.

Copyright © 2022 MAD Elevator Inc.