

LS-350 INSTALL GUIDE

Connections Diagram

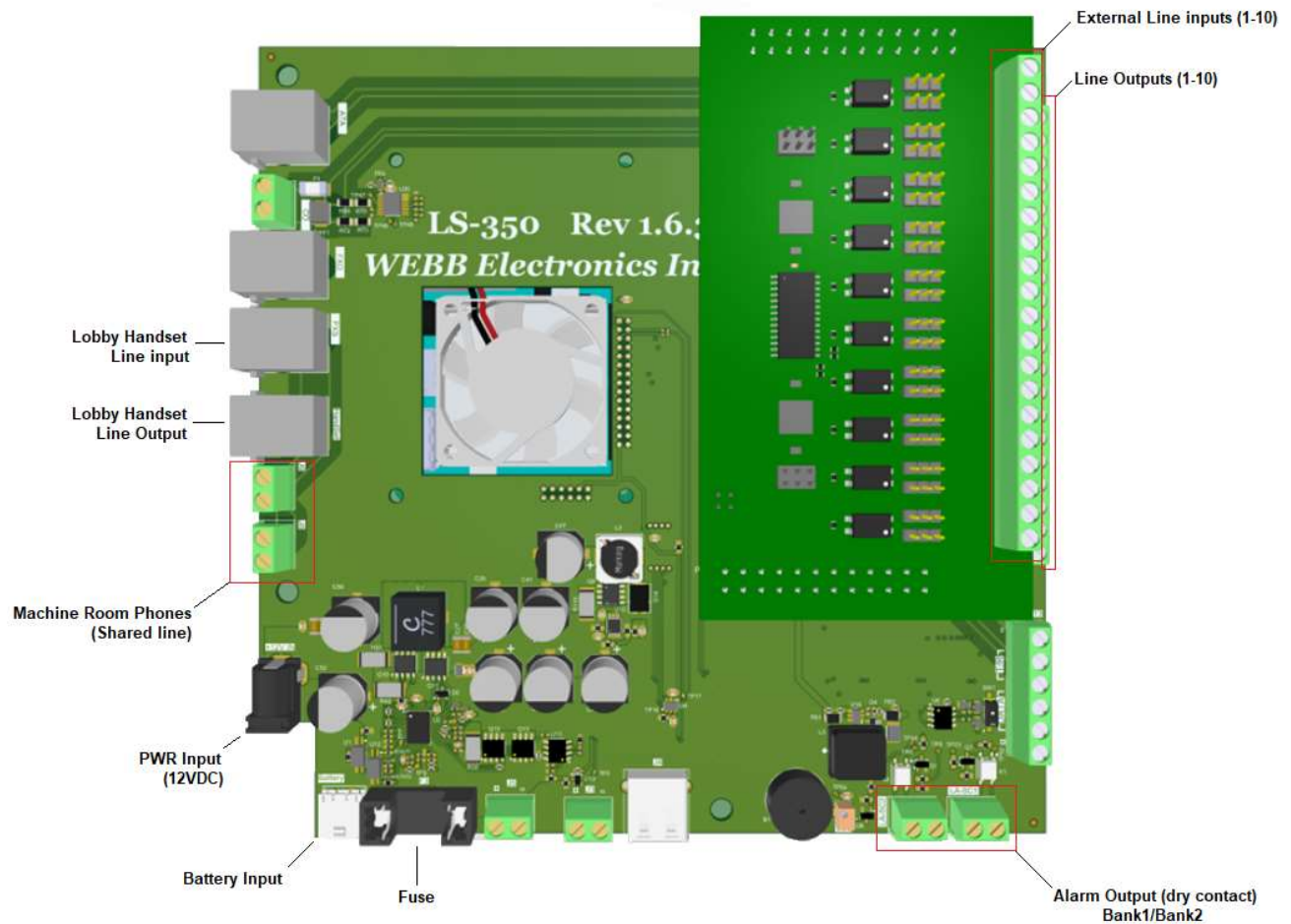


Figure 1 – LS-350 Connections

Installation Steps

1. Connect the incoming Phone Lines

- 1.1. Once the LS-350 is in place, connect the incoming Phone Lines to the terminal blocks on upper layer on the right (External Phone Lines Inputs – see figure 2).
- 1.2. Connect elevator phones to the terminal blocks on the bottom layer on the right (External Phone Lines Outputs – see figure 2).

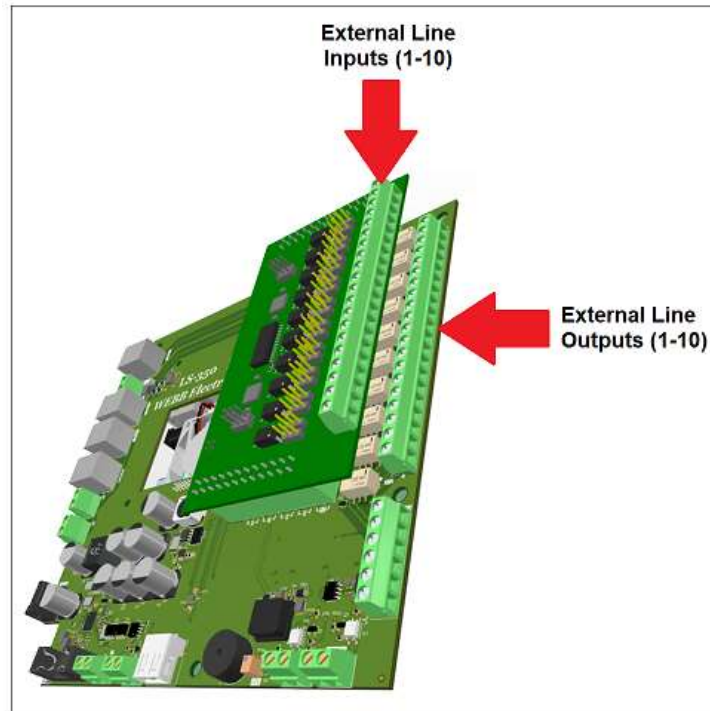


Figure 2 – Line connection

2. Power the system

- 2.1. Connect 12VDC power supply that is included in the box. The system should then boot-up.
- 2.2. Connect the battery wires to the battery terminal block.
Note: See Figure 1 for reference.

3. Alarm Setup

If the line monitoring alarm is triggered, an alarm prompt will be displayed on the LS-350 screen showing what cab is under alarm and its Buzzer will turn on.

- 3.1. Check the buzzer volume, adjust it to a proper level with the grey trimmer to the right of the buzzer.
- 3.2. To connect to external Alarm Panels or Hall stations, there are dry-contact outputs for up to two elevator banks on the bottom right. (See Figure 1)

Alarm Test Mode: It's possible to trigger the line monitoring alarm for all cabs for testing purposes. To do so, press and hold the Silence button located above the LS-350 Handset for 10 seconds.

*Note: To clear the alarm, just place a call **To** or **From** the cab under alarm.*

SYSTEM OPERATION

The LS-350 connects to 10 incoming phone lines to its respective output (one-to-one Mapping). It offers built in visual and audible status indication and allows for call barging using its local or remote handsets.

Status Screen

The Screen on the LS-350 display various status of the system. See below:

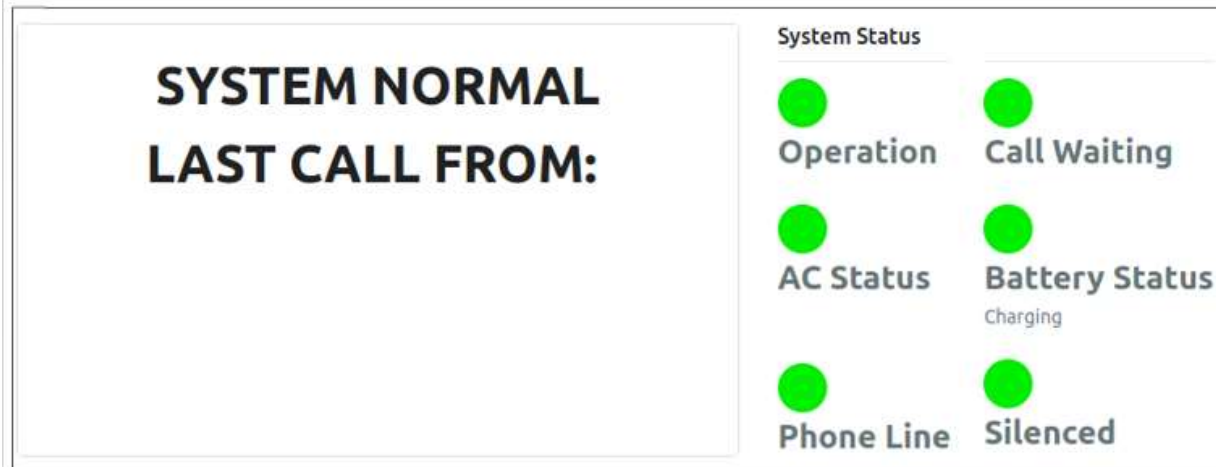


Figure 3 - LS-350 Display

- Operation
 - **Green** – System Idle.
 - **Yellow** – Line in use.
 - **Red** – AC not connected / External Line not connected.
- Call Waiting
 - **Green** – No cab phone is queued to place a call.
 - **Red** – One or more Cab phones on a queue to place a call using the external line.
- AC Status
 - **Green** – AC connected.
 - **Red** – AC not connected.
- Battery Status
 - **Green** – While AC is connected it display the charging status of the battery / If AC is not connected, it displays the percentage of the charge left on the battery.
 - **Red** – Battery not connected.
- Phone Line
 - **Green** – Phone line connected.
 - **Red** – Phone line not connected.
- Call Waiting
 - **Green** – Alarm not silenced.
 - **Red** – Alarm silenced.
 -

Call Barging

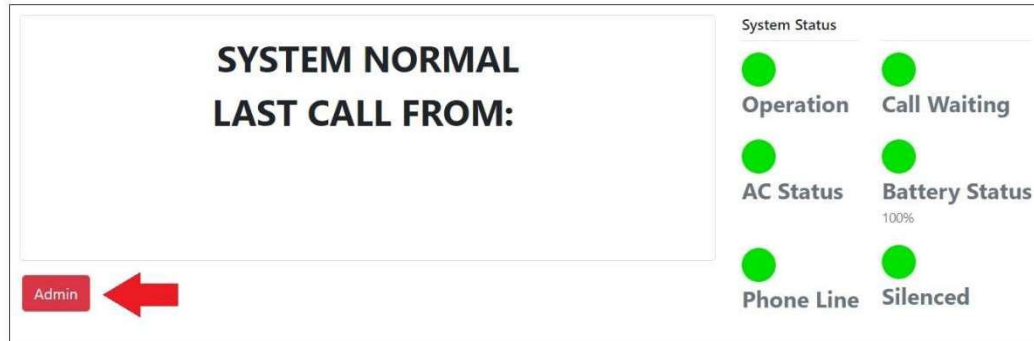
Pick up the local or any of the two remote handsets and dial the extension of the Cab you want to barge in.

The line outputs for the cab phones are numbered. In order to call a specific cab, dial **#X** ("X" being the number of the output that that cab is connected to).

CAB 1 >>>>>>> #1
CAB 2 >>>>>>> #2
CAB 3 >>>>>>> #3
CAB 4 >>>>>>> #4
CAB 5 >>>>>>> #5
CAB 6 >>>>>>> #6
CAB 7 >>>>>>> #7
CAB 8 >>>>>>> #8
CAB 9 >>>>>>> #9
CAB 10 >>>>>>> #10

LS-350 Alarm Configuration

1. Tap on the admin button highlighted below:

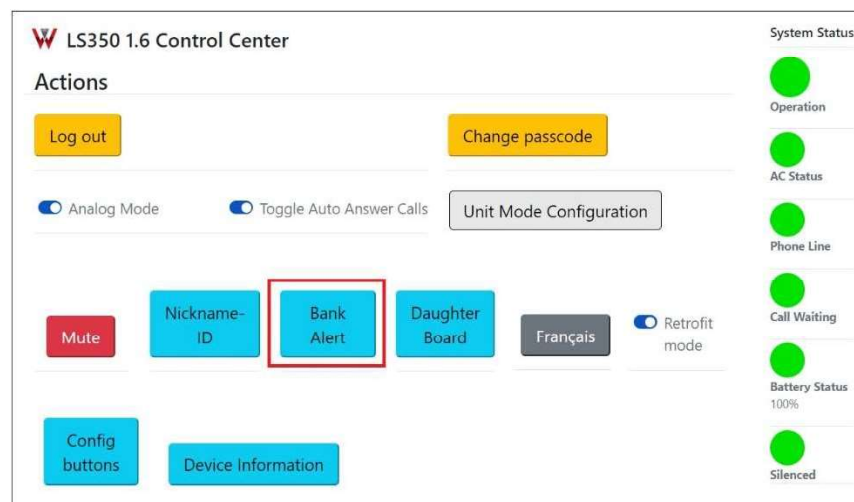


2. Enter the 6-digit password to access the User Interface (Note: Default:111111)

Enter your passcode

<input type="text"/>	<input type="text"/>	<input type="text"/>	<input type="text"/>	<input type="text"/>	<input type="text"/>
1	2	3			
4	5	6			
7	8	9			
Clear	0	Cancel			
Enter					

3. Tap on ALARM BANK to access the configuration page.



4. Arrange the elevator banks by moving the blue cursor to the position representing the desired elevator bank for each cab.

Station Number	Off	Bank 1	Bank 2
1:	Off		
2:	Off		
3:	Off		
4:	Off		
5:	Off		
6:	Off		
7:	Off		
8:	Off		
9:	Off		
10:	Off		

Test bank 1 Test bank 2 Reset Submit Cancel

Test Alarm Reset Alarm Status Save Changes

Note: Click on Submit to save the changes.

Note: To test the alarm bank click on the highlighted button to trigger the Alarm Annunciator.